

## Anti-BCRP mAb, clone BXP-21

Catalog Numbers: MC-236 (1 mL) and MC-177 (0.5 mL)

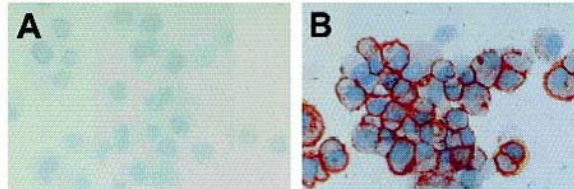


Fig. 1 Staining of cytopins (3100) of the parental IGROV1 ovarian tumor cell line (A) and the drug-selected BCRP-overexpressing subline T8 (B) with BXP-21. Color development was with AEC.

**BXP-21 reacts with an internal epitope of Breast Cancer Resistance Protein (BCRP, ABCG2), a 70 kDa transmembrane half-transporter which is involved in multidrug resistance.**

- Can be used for: immunocytochemistry, immunohistochemistry, or western blot.
- Reacts with human BCRP.
- BXP-21 does not cross-react with the human *MDR1*, *MRP1*, *MRP2* gene products.
- Available in 1 mL or 0.5 mL formats.

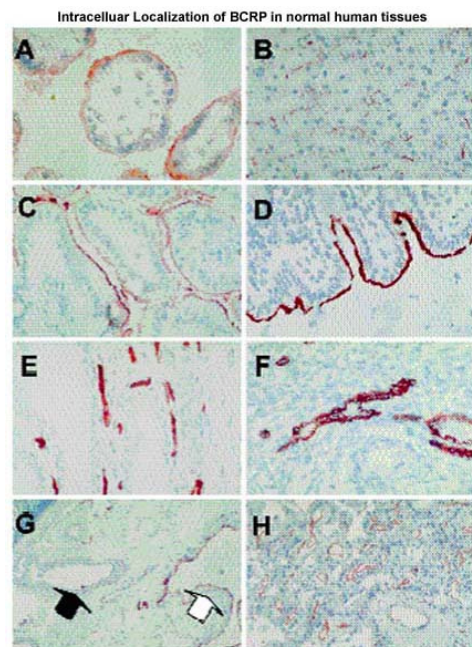


Fig. 2 BCRP staining of cryosections of human tissue using the BXP-21 (D and H) or BXP-34 (A-C, E-G) mAb. A, placenta (3100); B, liver (3100); C, small intestine (3100); D, colon (3100); E, prostate (3100); F, ovary (3100); G, submucosa of the stomach (333); H, choroid plexus (3100). Color development was with AEC.

For *In Vitro* Research Use Only. Not for use in diagnostic procedures in the U.S.

For additional information please visit [K-ASSAY.com](http://K-ASSAY.com)

**KAMIYA BIOMEDICAL COMPANY**

12779 Gateway Drive, Seattle, WA 98168  
 Tel: (206) 575-8068 Fax: (206) 575-8094  
 Email: [LifeScience@k-assay.com](mailto:LifeScience@k-assay.com)  
[www.k-assay.com](http://www.k-assay.com)