

PRODUCT DATA SHEET

Product: Anti-EDG-2 (CT) pAb

Cat. No.: PC-086 (100 µg)

Synonyms:

Lysophospholipid receptor A1, Vzg-1, mrec1.3 or GPCR26.

Background:

Endothelial cell differentiation gene-2 (EDG-2) receptor is a high affinity receptor for lysophosphatidic acid (LPA). EDG-2, like all other EDG receptors, couple multiple (3 or more) types of G proteins and transduction decreases in c[AMP]i through Gi and increases in [Ca⁺²]i by augmenting phospholipase C through Gq/11 and beta/gamma dimers and by induction of PI3 kinase, p125 FAK, phospholipase D by activating rho through G12/13. Human EDG-2 is present in high levels on oligodendrocytes and certain human malignant T cell lines. EDG-2 receptors (with EDG-4) may play a role in protecting cardiomyocytes from apoptosis induced by hypoxia and andrenergic stimulation.

Specificity:

Reacts with EDG-2.

Species Reactivity:

Human and Rat. Other species not tested.

Ig Isotype:

Rabbit IgG

Immunogen:

KLH conjugated synthetic peptide corresponding to the AA 328-344 of human EDG-2.

Epitope:

Recognizes an epitope on human EDG-2 between AA 328-344.

Format:

Rabbit polyclonal antibody against human endothelial cell differentiation gene 2 (CT). This antibody is provided as a 0.2 µm sterile-filtered solution in PBS with 0.08% sodium azide at a concentration of 1 mg/mL. Assayed to be >95% purity by SDS PAGE.

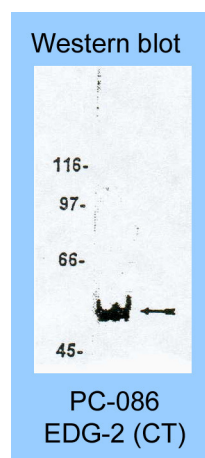
Storage:

Store at -20°C. Aliquot to avoid freeze/thaw cycles.

Application and Suggested Dilutions:

- Western blotting: Use at approximately 1 µg/mL. This antibody detects a band of about 50 kDa.

The optimal dilution for a specific application should be determined by the researcher.



Immuno-blot shows rat brain microsomal preparation which was probed with anti-EDG-2 at 1 µg/mL. Proteins were visualized using a goat anti-rabbit conjugated to HRP and a chemiluminescence detection system. EDG-2 indicated at 50 kDa.

Limitations:

For *in vitro* research use only. Not for use in diagnostics or in humans.

Warranty:

No warranties, expressed or implied, are made regarding the use of this product. KAMIYA BIOMEDICAL COMPANY is not liable for any damage, personal injury, or economic loss caused by this product.