

## PRODUCT DATA SHEET

**Product:** Anti-TLR9 mAb, clone 26C593.2

**Cat. No.:** MC-519 (100 µg)

**Synonym:**

CD289

**Specificity:**

Recognizes human Toll-Like Receptor 9 (TLR9). Detects a band of ~120 kDa by Western blot. May also detect a smaller band of TLR9 isoform B.

**Positive control:**

Whole cell lysate from human peripheral blood mononuclear cells (PBMC).

**Species Reactivity:**

Human, other species not tested.

**Ig Isotype:**

Mouse IgG<sub>1</sub>

**Immunogen:**

Synthetic peptide corresponding to aa 268-284 of human TLR9.

**Format:**

100 µg of Protein G purified antibody at 0.5 µg/mL in PBS with 0.2% gelatin and 0.05% sodium azide.

**Storage and Stability:**

Store at 4°C short term. For long term, store at -20°C. Aliquot to avoid freeze/thaw cycles.

**Applications and Suggested Dilutions:**

- Flow Cytometry: (Intracellular) Use at 2-5 µg/mL; 10<sup>6</sup> cells
- Western blot: Recommend 1-3 µg/mL.
- Immunohistochemistry: Use at a 1:100 dilution

The optimal dilution for a specific application should be determined by the researcher.

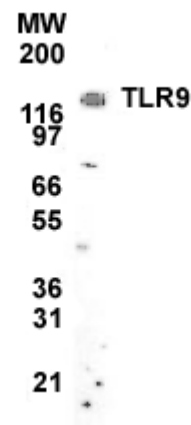


Figure: Western blot analysis of TLR9 in cell lysates from human PBMC using MC-519 at 2 µg/mL.

**Limitations:**

For *in vitro* research use only. Not for use in diagnostics or in humans.

**Warranty:**

No warranties, expressed or implied, are made regarding the use of this product. KAMIYA BIOMEDICAL COMPANY is not liable for any damage, personal injury, or economic loss caused by this product.