

PRODUCT DATA SHEET

Product: Anti-Bcl-rambo (CT) mAb, clone Rocky-2

Cat. No.: MC-409 (100 µg)

Synonyms:

Bcl-2-like Protein 13, Mil1 Protein.

Specificity:

Recognizes the C-terminus of human Bcl-rambo (aa 224-459). Detects endogenous proteins by ICC, IP and WB.

Species Reactivity:

Human. Other species not tested.

Ig Isotype:

Mouse IgG₁

Immunogen:

Recombinant human Bcl-rambo

Format:

100 µL of antibody purified from concentrated hybridoma tissue culture supernatant. Antibody is at 1 mg/mL in PBS with 0.02% sodium azide.

Purity:

≥95% by SDS-PAGE analysis.

Storage:

Store at 4°C short term and at -20°C long term. Aliquot to avoid freeze/thaw cycles.

Applications and Suggested Dilutions:

- Western blot: Use at a 1:1,000 dilution.
- Immunoprecipitation: Use at a 1:100 dilution.
- Immunocytochemistry: Use at a 1:300 dilution.

The optimal dilution for a specific application should be determined by the researcher.

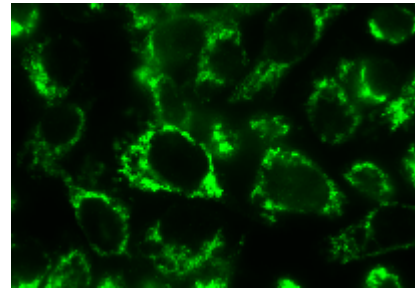


Figure: Immunofluorescence microscopy showing the detection of endogenous Bcl-rambo in HELA cells with the MAb to Bcl-rambo (human) (CT) (MC-409).

Method: Following fixation with 2% paraformaldehyde/PBS, HELA cells were incubated with MAb to Bcl-rambo (human) (CT) (MC-409) at a 1:300 dilution. An anti-mouse IgG antibody conjugated with Alexa Fluor 488 was used for detection.

Limitations:

For *in vitro* research use only. Not for use in diagnostics or in humans.

Warranty:

No warranties, expressed or implied, are made regarding the use of this product. KAMIYA BIOMEDICAL COMPANY is not liable for any damage, personal injury, or economic loss caused by this product.