

PRODUCT DATA SHEET

Product: Anti-SPGP mAb, clone USal-hBSEP-McAb-1

Cat. No.: MC-333 (100 µg)

Synonyms:

Anti-Sister of P-glycoprotein (SPGP), anti-Bile Salt Export Pump (BSEP), anti-ABCB11

Specificity:

Recognizes human SPGP. Does not cross-react with human P-glycoprotein.

Species Reactivity:

Human. Others not tested.

Ig Isotype:

Mouse IgG₁

Immunogen:

Synthetic peptide corresponding to aa 705-718 (YLVHEPPLAVVDHK) of human SPGP.

Format:

100 µg of liquid protein G affinity-purified monoclonal antibody at 1 mg/mL containing 100 nM sodium azide and protein stabilizer.

Storage:

Store at 4°C short term, -20°C long term. Aliquot to avoid freeze/thaw cycles.

Applications and Suggested Dilutions:

- Immunocytochemistry: Cytospin preparations.
 - Western blot: Use at a 1:50–1:200 dilution. Not suitable for IHC!
- The optimal dilution for a specific application should be determined by the researcher.

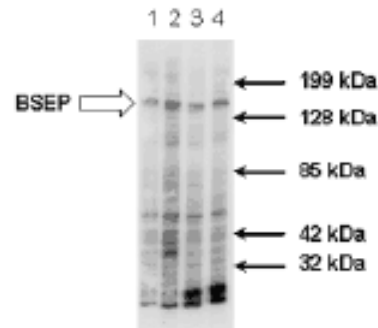


Figure: Western blot analysis using monoclonal antibody to SPGP, clone USal-hBSEP-McAb-1.

Method: Conditions of the assay carried out using crude plasma membranes purified from human liver tissue samples collected by fine needle biopsy; Amount of proteins loaded: 40 µg; Dilutions: lane 1:1/200; lane 2:1/150; lane 3:1/100; lane 4:1/50.

Limitations:

For *in vitro* research use only. Not for use in diagnostics or in humans.

Warranty:

No warranties, expressed or implied, are made regarding the use of this product. **KAMIYA BIOMEDICAL COMPANY** is not liable for any damage, personal injury, or economic loss caused by this product.