

PRODUCT DATA SHEET

Product: Anti-Bcl-xL, clone 2H12

Cat. No.: MC-303 (100 µg)

Background:

Bcl-xL is structurally related to the Bcl-2 gene and is a member of the Bcl-2 family of oncoproteins. Overexpression of Bcl-xL to other Bcl-2 members is believed to promote cell survival; its ratio to other Bcl-2 family members is believed to modulate the apoptotic process.

Specificity:

Reacts specifically with the Bcl-xL protein.

Species Reactivity:

Human, mouse and rat. Others not tested.

Ig Isotype:

Mouse IgG_{2a}

Immunogen:

Synthetic peptide corresponding to aa 3-14 of the human Bcl-xL protein.

Format:

100 µg purified IgG at approx. 1 mg/mL. Purified from ascites fluid.

Storage:

Store at -20°C. Aliquot to avoid repeated freeze/thaws.

Applications and Suggested Dilutions:

- Western blot: Use at 1-5 µg/mL.

The optimal dilution for a specific application should be determined by the researcher.

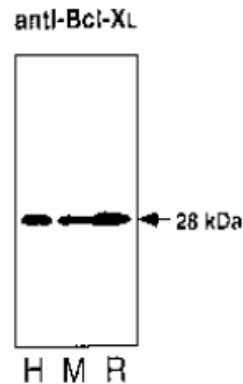


Figure:

Western blot analysis of thymocytes from human, mouse and rat. Cell lysates from approximately 10⁶ cells were loaded into each lane of a 12% SDS PAGE gel and blotted onto PVDF membranes. MC-303 was used at 1 µg/mL. Detection was by chemiluminescence detection using an anti-mouse secondary antibody.

Limitations:

For *in vitro* research use only. Not for use in diagnostics or in humans.

Warranty:

No warranties, expressed or implied, are made regarding the use of this product. KAMIYA BIOMEDICAL COMPANY is not liable for any damage, personal injury, or economic loss caused by this product.