

## PRODUCT DATA SHEET

**Product:** Anti-BCRP mAb, clone BXP-21

**Cat. No.:** MC-236 (1 mL)

Page 1 of 2

**Specificity:**

BXP-21 reacts with an internal epitope of Breast Cancer Resistance Protein (BCRP, ABCG2), a 70 kDa transmembrane half-transporter which is involved in multidrug resistance. BXP-21 does not cross-react with the human *MDR1*, *MRP1*, *MRP2* gene products.

**Species Reactivity:**

Reacts with human BCRP. Others not tested.

**Ig Isotype:**

Mouse IgG<sub>2a</sub>

**Immunogen:**

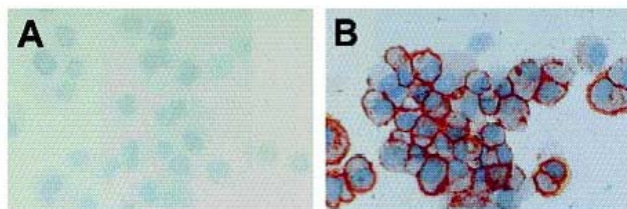
A fusion protein consisting of the *E. coli* maltose-binding protein and a 126 amino acids part of the BCRP peptide (aa 271-396 of BCRP, GenBank accession no. AF098951).

**Format:**

1 mL protein G purified monoclonal antibody at 100 µg/mL in PBS with protein stabilizer and 0.02% sodium azide.

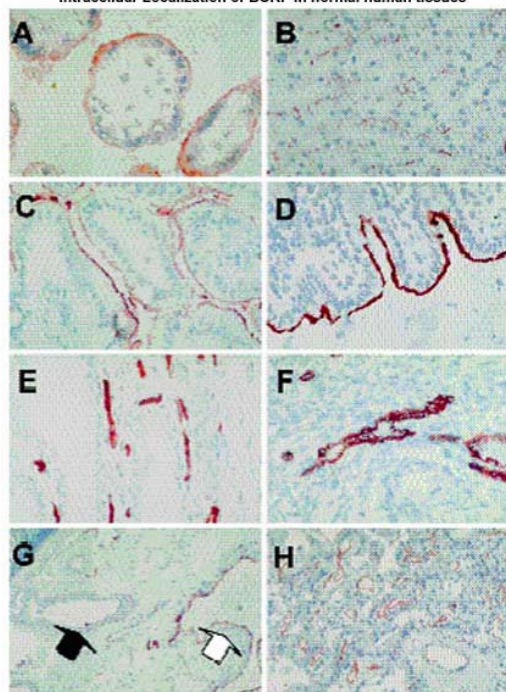
**Storage:**

Store at 4°C for short term. Aliquot and store at -20°C for long term. Avoid repeated freeze/thaw cycles.



**Fig. 1** Staining of cytopspins (3100) of the parental IGROV1 ovarian tumor cell line (A) and the drug-selected BCRP-overexpressing subline T8 (B) with BXP-21. Color development was with AEC.

Intracellular Localization of BCRP in normal human tissues

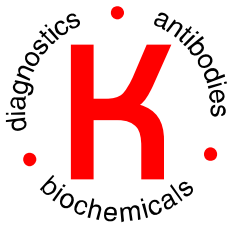


**Fig. 2** BCRP staining of cryosections of human tissue using the BXP-21 (D and H) or BXP-34 (A-C, E-G) mAb. A, placenta (3100); B, liver (3100); C, small intestine (3100); D, colon (3100); E, prostate (3100); F, ovary (3100); G, submucosa of the stomach (333); H, choroid plexus (3100). Color development was with AEC.

**Applications and Suggested Dilutions:**

- Immunocytochemistry: Use at a 1:20-1:50 dilution on acetone-fixed cytopspin preparations.
- Immunohistochemistry: Use at a 1:20 dilution on acetone-fixed frozen sections, followed by incubation with rabbit anti-mouse IgG and a monoclonal mouse APAAP complex. BXP-21 can be used on formaldehyde-fixed and paraffin-embedded human tissues and tumors: Pretreat with 10 mM citric acid, pH 6.0, for 20 min.
- Western blot
- Flow cytometry: Optimal conditions still to be determined.

The optimal dilution for a specific application should be determined by the researcher.



## PRODUCT DATA SHEET

**Cat. No.:** MC-236 (1 mL)

Page 2 of 2

**Limitations:**

For *in vitro* research use only. Not for use in diagnostics or in humans.

**Warranty:**

No warranties, expressed or implied, are made regarding the use of this product. KAMIYA BIOMEDICAL COMPANY is not liable for any damage, personal injury, or economic loss caused by this product.